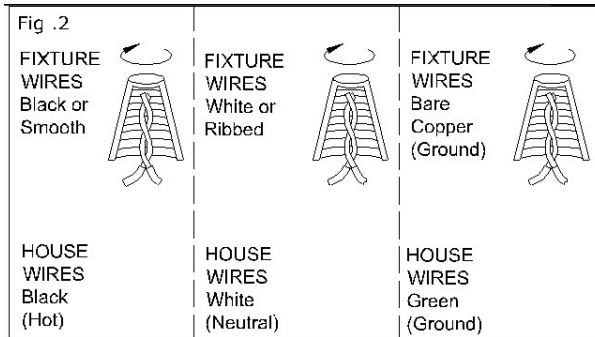
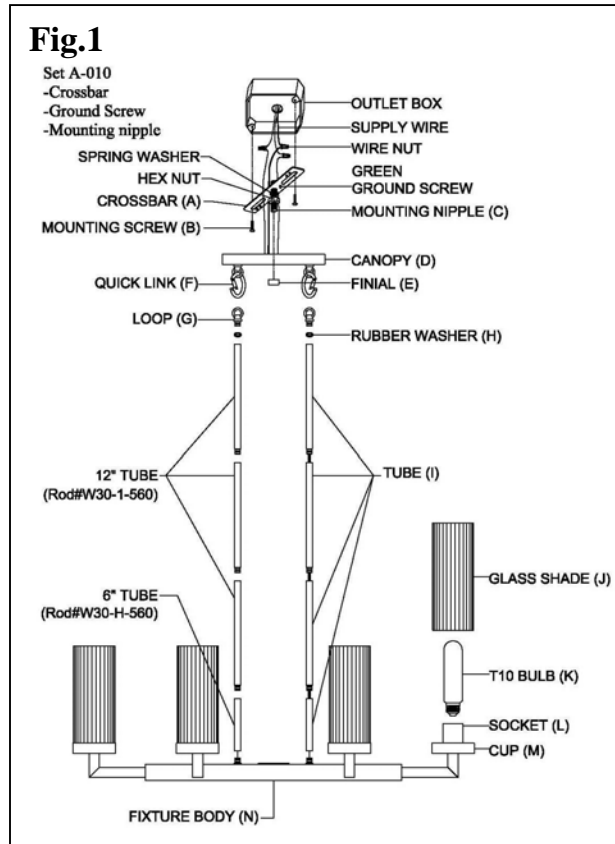


INSTALLATION INSTRUCTIONS FOR FIXTURE #3046-560

**WARNING! SHUT POWER OFF AT FUSE OR CIRCUIT BREAKER.
AVERTISSEMENT! COUPER LE COURANT AU NIVEAU DES FUSIBLES OU DU DISJONCTEUR.**

ASSEMBLING THE FIXTURE (FIG. 1)

1. Shut off the power supply at the fuse box or circuit breaker. If necessary, remove the old fixture from ceiling including the mounting hardware.
2. Carefully remove the new fixture from the packaging and check that all parts are included as shown in the illustration.
3. Thread the mounting nipple (C) into crossbar (A), then secure with spring washer and hex nut.
4. Attach the crossbar (A) to the outlet box using the mounting screws (B) (SIZE: #8-32N * L0.5"). The side of the crossbar (A) marked "GND" must face out
5. Determine the desired hanging height and thread tubes (I) to top of the fixture body (N). Pass the wires carefully through each tube as you assembled. Please remove the nipple if installing with one 12" rod only.
6. Place the rubber washers (H) over the nipple of loops (G), then thread the loops (G) to top of the tubes (I).
7. Adjust the position of loops (G), and then attach the loops (G) to the quick links (F).
8. Connect the electrical wires as shown in Fig. 2, making sure that all wire connectors are secured. If your outlet box has a ground wire (green or bare copper), connect the ground wire from the fixture to it. Otherwise, connect the fixture's ground wire directly to the crossbar using the green screw provided.
9. After wires are connected, tuck them carefully into the ceiling junction box.
10. Attach the whole fixture body onto the outlet box by protruding mounting nipple (C) through mounting hole on the canopy (D) and secure with finial (E).
11. Install the T10 bulbs (K) into the sockets (L), bulb included. **(DO NOT EXCEED THE MAXIMUM WATTAGE RATING!)
(NE PAS DEPASSER LA PUISSANCE NOMINALE MAXIMALE!).**
12. Slide the glass shades (J) into the cups (M).



Your installation is now complete. Return power to the outlet box and test the fixture.

